

WOOD GUARD RAIL REQUIRED

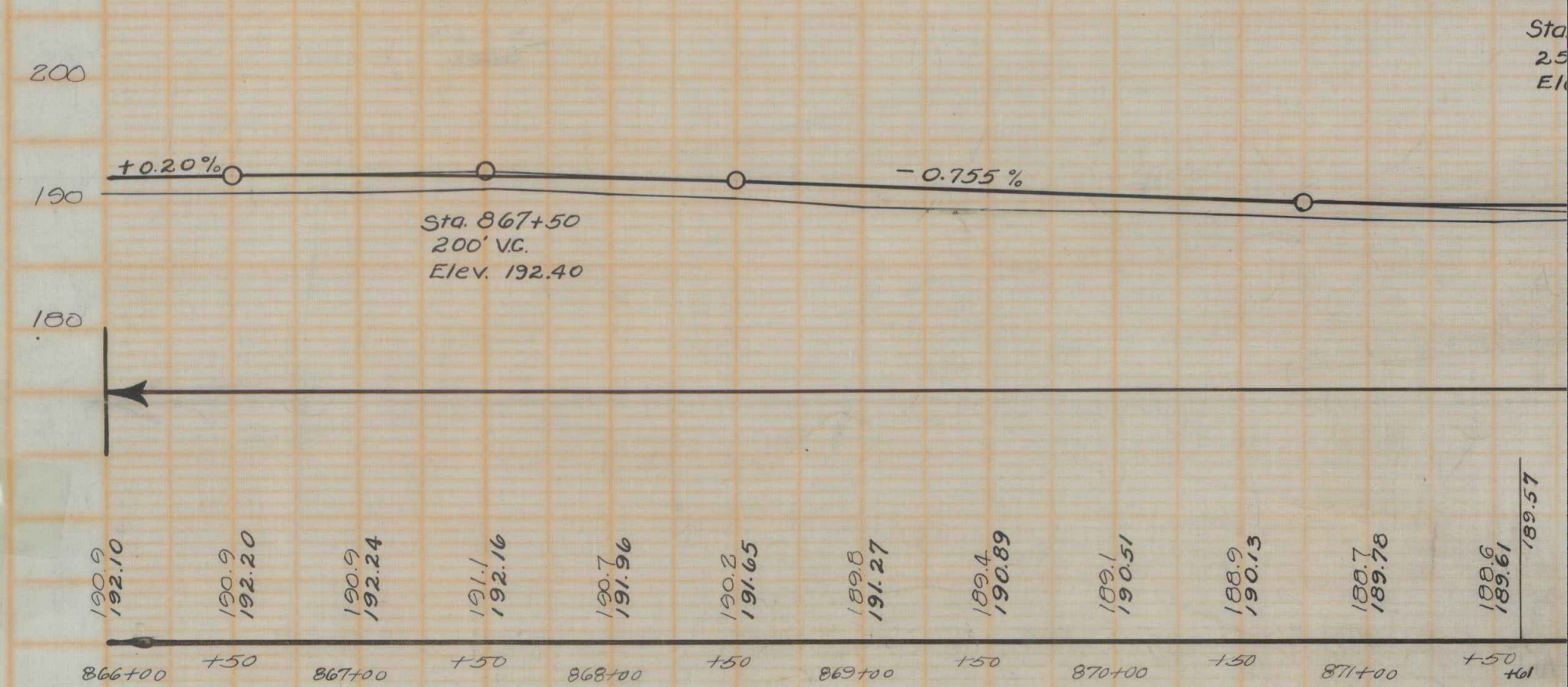
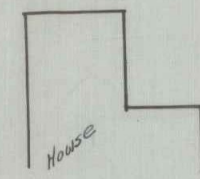
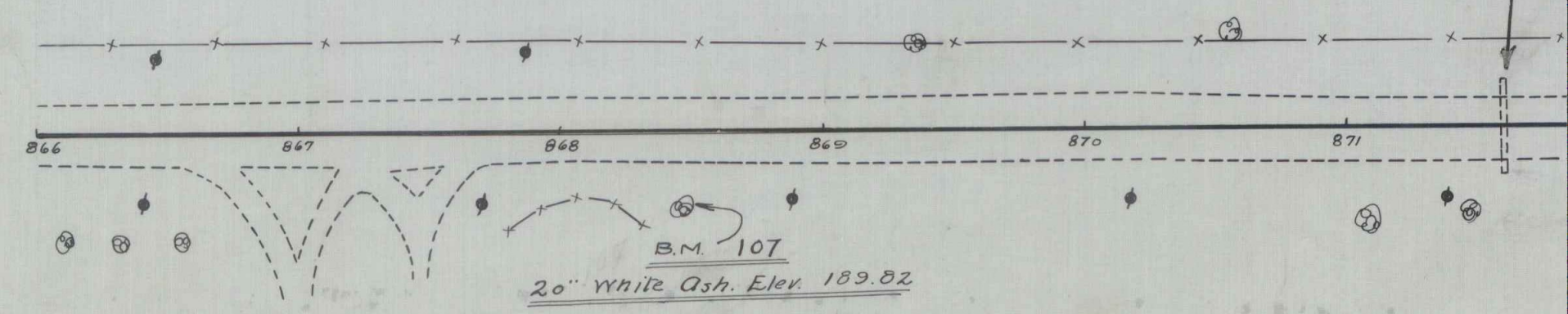
LEFT
Sta 871+43 to 871+73 Length 30 ft

RIGHT
Sta 871+43 to 871+73 Length 30 ft

NEW CULVERTS REQUIRED

Sta 871+61 - 18" Reinf. Concrete Pipe Culvert 32.3
Concrete Class B (1-21-2) 27.0
Reinforcing Steel 33.4

Record Plan Addition
Stop at Sta 866+00
August 9 1954
F. W. Astel



B.M. No. 107 Spike in 20" White Oak Right of Sta. 868+46 Elev. 189.82